



DLEC1 Polyclonal Antibody

Catalog No	YP-Ab-00376
Isotype	IgG
Reactivity	Human;Rat;Mouse;
Applications	IHC;IF;ELISA
Gene Name	DLEC1
Protein Name	Deleted in lung and esophageal cancer protein 1
Immunogen	The antiserum was produced against synthesized peptide derived from human DLEC1. AA range:1-50
Specificity	DLEC1 Polyclonal Antibody detects endogenous levels of DLEC1 protein.
Formulation	Liquid in PBS containing 50% glycerol, 0.5% BSA and 0.02% sodium azide.
Source	Polyclonal, Rabbit,IgG
Purification	The antibody was affinity-purified from rabbit antiserum by affinity-chromatography using epitope-specific immunogen.
Dilution	Immunohistochemistry: 1/100 - 1/300. Immunofluorescence: 1/200 - 1/1000. ELISA: 1/10000. Not yet tested in other applications.
Concentration	1 mg/ml
Purity	≥90%
Storage Stability	-20°C/1 year
Synonyms	DLEC1; DLC1; Deleted in lung and esophageal cancer protein 1; Deleted in lung cancer protein 1; DLC-1
Observed Band	
Cell Pathway	Cytoplasm .
Tissue Specificity	Expressed in all tissues examined. Expression is highest in prostate and testis.
Function	alternative products:At least six differentially spliced products may exist,disease:Defects in DLEC1 may be a cause of breast cancer.,disease:Defects in DLEC1 may be a cause of esophageal cancer [MIM:133239].,disease:Defects in DLEC1 may be a cause of primary lung cancer [MIM:211980]. In 33% of lung, esophageal and renal cancer cell lines and primary cancers, there is a lack of functional transcripts and an increase in alternatively spliced non-functional transcripts; the gene itself is not altered.,disease:Defects in DLEC1 may be a cause of renal cancer.,function:May act as a tumor suppressor by inhibiting cell proliferation.,sequence caution:Intron retention.,tissue specificity:Expressed in all tissues examined. Expression is highest in prostate and testis.,
Background	The cytogenetic location of this gene is 3p21.3, and it is located in a region that is commonly deleted in a variety of malignancies. Down-regulation of this gene has



been observed in several human cancers including lung, esophageal, renal tumors, and head and neck squamous cell carcinoma. In some cases, reduced expression of this gene in tumor cells is a result of aberrant promoter methylation. Several alternatively spliced transcripts have been observed that contain disrupted coding regions and likely encode nonfunctional proteins.[provided by RefSeq, Mar 2016],

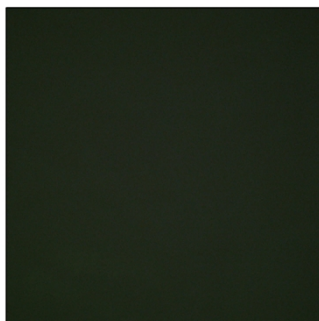
matters needing attention

Avoid repeated freezing and thawing!

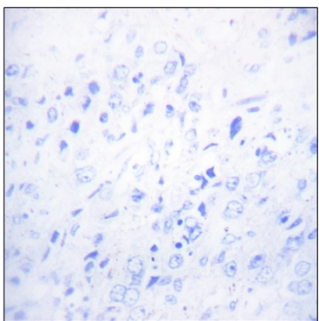
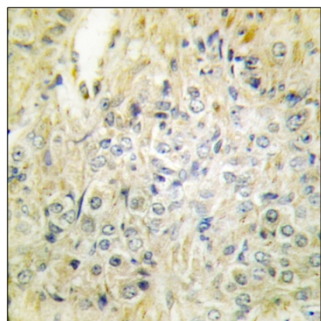
Usage suggestions

This product can be used in immunological reaction related experiments. For more information, please consult technical personnel.

Products Images



Immunofluorescence analysis of HeLa cells, using DLEC1 Antibody. The picture on the right is blocked with the synthesized peptide.



Immunohistochemistry analysis of paraffin-embedded human prostate carcinoma tissue, using DLEC1 Antibody. The picture on the right is blocked with the synthesized peptide.